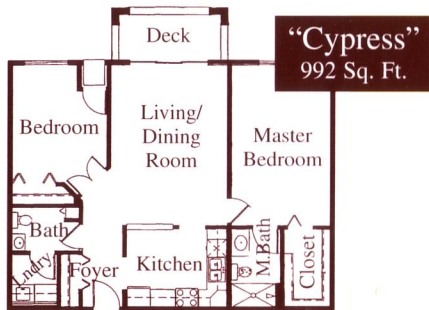
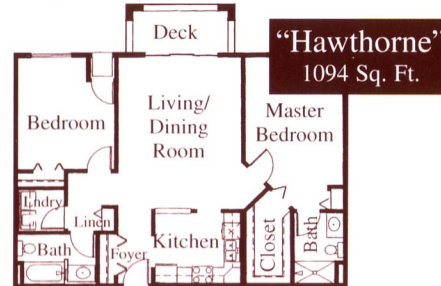
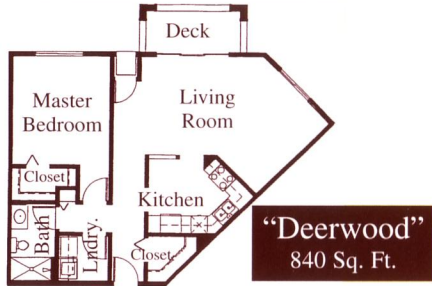


We've Got Plans For You.



Gramercy Park Cooperative.



*A Community Of
Neighbors.*



763-531-9424

10400 45th Ave. N.
Plymouth, MN 55442

Email: info@gramercyplymouth.com



Dramatic Designs Offer The Space You Need, The Value You Appreciate.

The 56-unit resident-owned community includes a variety of one and two bedroom floor plans ranging in size from 840 to 1,237 square feet. (Actual dimensions may vary.)

Apartment homes feature an eat-in kitchen with 21-cubic foot refrigerator, dishwasher, disposal, microwave and self-cleaning oven. All appliances are maintained by the co-op. Each home



includes a balcony, cable TV, laundry room with washers

& dryers, and generous storage.

A Better Place To Live.

Gramercy Park Cooperative combines the advantages of home ownership with the conveniences of community living for active adults age 55 & up.

You'll find everything you want in a home and more. Neighborly get-togethers are an



everyday occurrence and the whole environment is maintenance-free. It is, quite simply, a better place to live.

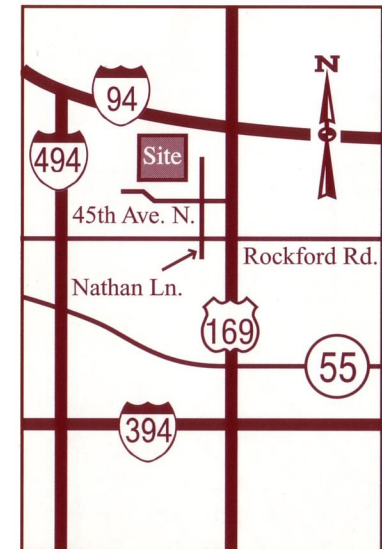


Amenities include The Gramercy room for social activities, guest suite, craft room, fitness center, library/computer center, underground heated parking, workshop, outdoor deck with grills and garden plots.

It's not too soon to plan for the times ahead. We have enclosed a Waiting List policy and Application along with an explanation of current Cooperative costs.



Perhaps it is time you considered joining the Community of Neighbors at Gramercy Park Cooperative of Plymouth. Come, visit our special site nestled near woods, ponds, and walking paths.



Gramercy Park Of Plymouth is located at 10400 45th Avenue N.